

30' x 120'  
Headline Mining  
Dredge

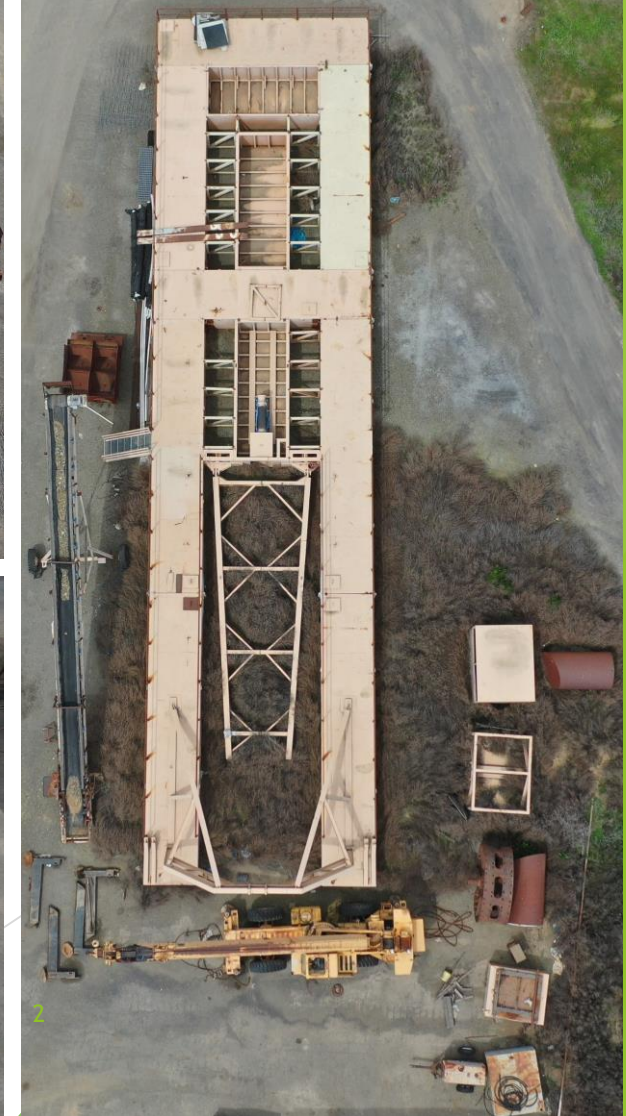


**A.M. KING** INDUSTRIES, INC

April 2020 <sub>1</sub>



## Shop Manufactured 30' Wide x 120' Long Headline Mining Dredge





## Shop Manufactured 30' Wide x 120' Long Headline Mining Dredge

### SCOPE OF SUPPLY:

- Hull - consisting of 8 each Pre-Fabricated Compartments with Suction Ladder Assembly
  - Approximately 7' Wide in various lengths with 4 sections being 30' Long and 4 sections being 38' Long





## Shop Manufactured 30' Wide x 120' Long Headline Mining Dredge

### SCOPE OF SUPPLY:

- Slurry Pump - 1 each Warman 16" x 14" Slurry Pump
  - Pumping an estimated 9,000 GPM at an estimated 92' of total head, 50' total elevation and a discharge pipe of 14"







## Shop Manufactured 30' Wide x 120' Long Headline Mining Dredge

### SCOPE OF SUPPLY:

- Winches - 4 each Pullman Winches
  - Pullmaster Model M18

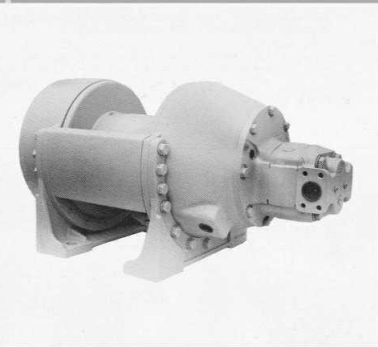




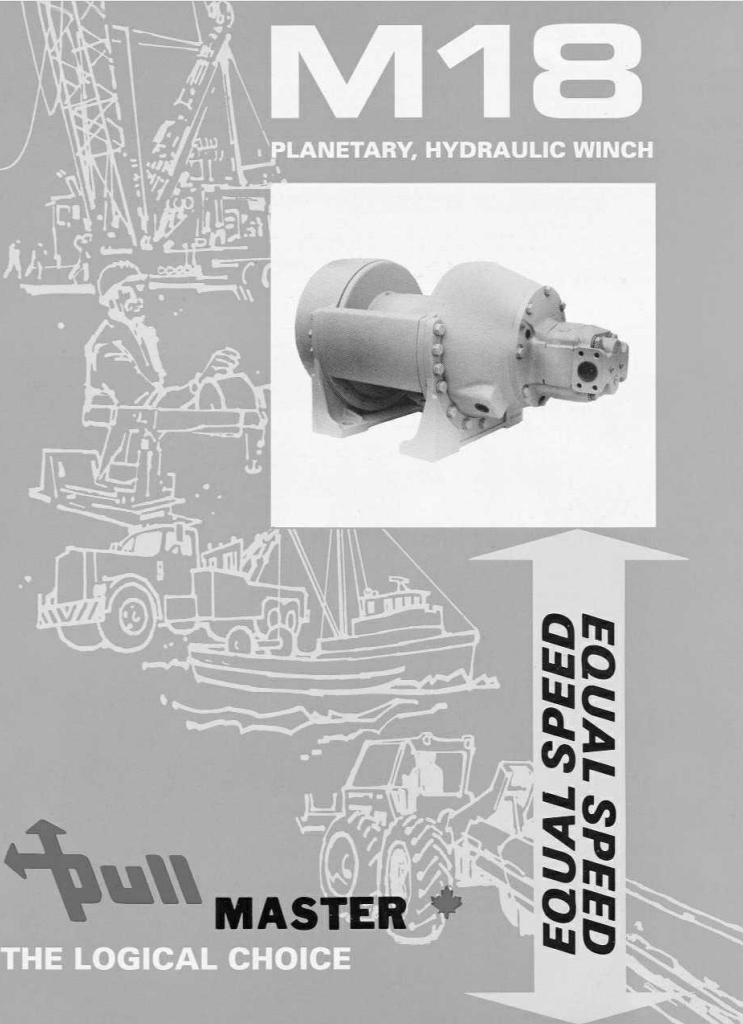
# Shop Manufactured 30' Wide x 120' Long Headline Mining Dredge

## M18

### PLANETARY, HYDRAULIC WINCH



EQUAL SPEED  
DEEPS TANDS



pull MASTER

THE LOGICAL CHOICE

## MODEL M18 PLANETARY HYDRAULIC WINCH

**DESCRIPTION**

The **PULLMASTER Model M18** is a high performance, high efficiency planetary winch having equal speed in forward and reverse rotation. The automatic, multi-disc brake of this unit is effective in one direction only and achieves exceptionally smooth lowering control of the maximum rated load in a stepless operation. **PULLMASTER Model M18** planetary winch is powered by a hydraulic gear motor and the required reduction ratio of 39.56:1 is established by two planetary reduction stages. In forward (hoisting) rotation the hydraulic motor drives direct into the planetary reduction stages without affecting the brake assembly. When forward (hoisting) rotation is stopped, an over-running clutch, located between the brake assembly and the motor drive shaft, locks and the multi-disc brake will positively hold the maximum load with a safety factor of 3:1. The multi-disc brake is spring applied and pressure released, requiring no calibration for safe operation. When the hydraulic motor is powered for reverse rotation (lowering) the brake is released automatically and is then modulated for the desired lowering speed by a single control lever. A counter-balance valve or brake valve is not required for dynamic braking. All moving parts of the **PULLMASTER Model M18** planetary winch are totally enclosed and run in an oil bath, assuring long, trouble free service with a minimum requirement for maintenance.

**OPTIONS**

- SPECIAL DRUM SIZES • HYDRAULICALLY ACTUATED FREE SPOOLS 4GI • RATEHET & PAWL • EXTERNAL BRAKE RELEASE
- HYDRAULIC PISTON MOTORS • DRUM GROOMING • ETC.

**PERFORMANCE**

The performance of the **Pullmaster Model M18** is based on a hydraulic motor of 77 (US) gal @ 288 l/min at 2300 psi (159 bar) hydraulic pressure. Driven at maximum hydraulic rotation = 4.11 rpm. Unit net torque at maximum hydraulic pressure = 83250 lb-in (9406 Nm).

MODEL NUMBER	BARE DRUM		MEAN DRUM		FULL DRUM	
	LINE PULL	LINE SPEED	LINE PULL	LINE SPEED	LINE PULL	LINE SPEED
	FORWARD	REVERSE	FORWARD	REVERSE	FORWARD	REVERSE
M18-3-101-1 based on 3/4" wire rope	18000 lb 80.0 kN	122 fpm 37 m/min	122 fpm 37 m/min	14644 lb 65.1 kN	159 fpm 48 m/min	159 fpm 48 m/min
M18-3-101-2 based on 3/4" wire rope	12109 lb 53.9 kN	182 fpm 55 m/min	183 fpm 55 m/min	10379 lb 46.2 kN	218 fpm 66 m/min	218 fpm 66 m/min
					11288 lb 50.2 kN	195 fpm 59 m/min
					8649 lb 38.5 kN	255 fpm 78 m/min

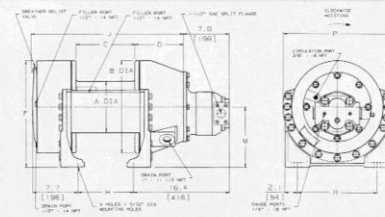
The volumetric requirement for the **PULLMASTER Model M18** planetary winch is the recommended maximum and must not be exceeded. When the **PULLMASTER Model M18** is installed in existing hydraulic circuits with a lesser operating pressure, the performance will change. Performance graphs for line speed vs. oil volume and line pull vs. hydraulic pressure are available upon request.

**CABLE STORAGE**

MODEL NUMBER	DRUM SIZE			WIRE ROPE DIAMETER						
	BARREL	FLANGE	LENGTH	3/8"	7/16"	1/2"	9/16"	5/8"	3/4"	7/8"
M18-3-101-1	216 mm	17.1"	10'	615 ft	494 ft	332 ft	310 ft	239 ft	170 ft	113 ft
M18-3-101-2	330 mm	13"	20'	1359 ft	1088 ft	738 ft	681 ft	528 ft	375 ft	251 ft

Other drum sizes will be made available for quantity requirements.

**DIMENSIONS**



MODEL NUMBER	A	B	C	D	F	H	J	M	P	R
M18-3-101-1	8.5"	15.5"	10"	8.3"	17.9"	0.431"	25.9"	10.13"	18.4"	13.5"
	216 mm	394 mm	254 mm	211 mm	455 mm		658 mm	257 mm	468 mm	
M18-3-101-2	13"	20"	16"	8.4"	18.5"		32.1"	12.88"	23.3"	17.25"
	330 mm	508 mm	406 mm	213 mm	470 mm		816 mm	314 mm	591 mm	438.2 mm

**PULLMASTER** planetary winches are covered by a liberal warranty. Parts and Repair Service are available from authorized **PULLMASTER** distributors throughout Canada, the United States and in most over-seas areas.

**IMPORTANT**  
**PULLMASTER** planetary winches are neither designed nor intended for installation on equipment used in lifting or moving of personnel.

Other PULLMASTER winch models are available in capacities ranging from 1000 lb to 50,000 lb (4.4 kN to 222.4 kN) line pull.

**DISTRIBUTOR**

7


For more information write to:  
**PULLMASTER WINCH CORPORATION**  
6247 - 130 STREET, SURREY, B.C. CANADA V3W 7X4  
TELEPHONE: (604) 594-4444 • FAX: (604) 591-7332  
http://www.pullmaster.com E-mail: info@pullmaster.com


PMC 216 Pul.99001 Specifications / Dimensions subject to change without notice and incurring obligation. PRINTED IN CANADA



# Shop Manufactured 30' Wide x 120' Long Headline Mining Dredge

M /HS e





**M Series: Equal Speed**

High-performance, high-efficiency planetary winch with equal speed in both directions. The M Series offers exceptionally smooth working control of the maximum rated load in a step-less operation.

- Hydraulic gear motor
- Spring-applied, pressure-released, automatic multi-disc brake
- Over-running clutch enables free rotation in the hoisting direction without affecting the brake.
- During lower operations, the over-running clutch locks causing the disc brakes to

**H Series: Rapid Reverse**

High-performance, high-efficiency planetary winch with rapid reverse speed 45 times faster than forward speed. In reverse rotation (lowering), the maximum load can be positively controlled at a line speed equal to the hoisting speed.

- Hydraulic gear motor
- Spring-applied, pressure-released multi-disc brake with static and dynamic functions
- During hoisting, the hydraulic motor drives direct into the planetary reductions without affecting the brake assembly. When forward rotation is stopped, an over-running clutch will lock and the multi-disc brake will stop

M Series		Equal Speed in Both Directions			
		H Series		Rapid Reverse	
Mod	Bare Drum		Full Drum		Drum Cap
	Line Pull	Line Speed*	Line Pull	Line Speed	
M5-3-230-1	6,000 lb	69 fpm	4,091 lb	101 fpm	1/2" -152 ft
	267 kN	21 m / m in	182 kN	31 m / m in	46m
M8-3-30-1 H8-3-30-1	8,500 lb	116 fpm	5,795 lb	170 fpm	1/2" -152 ft
	37.8 kN	35 m / m in	25.8 kN	52 m / m in	46m
M8A-3-30-1 H8A-3-30-1	7,000 lb	135 fpm	4,773 lb	199 fpm	1/2" -152 ft
	31.1 kN	41 m / m in	2.12 kN	61 m / m in	46m
M8B-3-30-1 H8B-3-30-1	3,790 lb	249 fpm	2,584 lb	366 fpm	1/2" -152 ft
	16.9 kN	76 m / m in	11.5 kN	111 m / m in	46m
M12-3-97-1 H12-3-97-1	12,121 lb	104 fpm	7,143 lb	176 fpm	5/8" -222 ft
	53.9 kN	32 m / m in	31.8 kN	54 m / m in	68m
M12B-3-97-1 H12B-3-97-1	6,120 lb	205 fpm	3,606 lb	348 fpm	5/8" -222 ft
	27.2 kN	63 m / m in	16.0 kN	106 m / m in	52 m
M18-3-101-1 H18-3-101-1	18,000 lb	122 fpm	11,288 lb	195 fpm	3/4" -170 ft
	80.1 kN	37 m / m in	50.2 kN	59 m / m in	43 m
M25-7-86-1 H25-7-86-1	25,000 lb	140 fpm	16,860 lb	207 fpm	7/8" -140 ft
	111.2 kN	43 m / m in	75.0 kN	63 m / m in	43 m
M25B-7-86-1 H25B-7-86-1	12,698 lb	273 fpm	8,564 lb	405 fpm	7/8" -140 ft
	56.5 kN	83 m / m in	3.81 kN	124 m / m in	43 m
M50-7-86-1 H50-7-86-1	50,000 lb	69 fpm	33,889 lb	102 fpm	1 1/4" -177 ft
	222.4 kN	21 m / m in	150.7 kN	31 m / m in	54 m
M75-7-191-1 H75-7-191-1	75,000 lb	72 fpm	41,748 lb	129 fpm	1 1/8" -727 ft
	333.3 kN	22 m / m in	185.6 kN	39 m / m in	222 m

\*For H Series reversing speeds, multiply the line speeds listed by a

HL Series		Rapid Reverse & 2-Speed Forward							
		Low Speed			High Sp			Drum Cap	
Mod	Bare Drum		Full Drum		Bare Drum		Full Drum		
	Line Pul	Line Speed	Line Pul	Line Speed	Line Pul	Line Speed	Line Pul	Line Speed	
HL25-786-1	25,000 lb	140 fpm	16,860 lb	207 fpm	5,357 lb	651 fpm	3,613 lb	965 fpm	7/8" -140 ft
	111.2 kN	43 m / m in	75.0 kN	63 m / m in	23.8 kN	198 m / m in	16.1 kN	294 m / m in	43 m

**CAUTION:** The set 3 wraps of cable must be left on the drum to assist the cable clamp in holding the load.  
**WARNING:** Winches and capstans are not intended to be used for lifting or moving of persons.



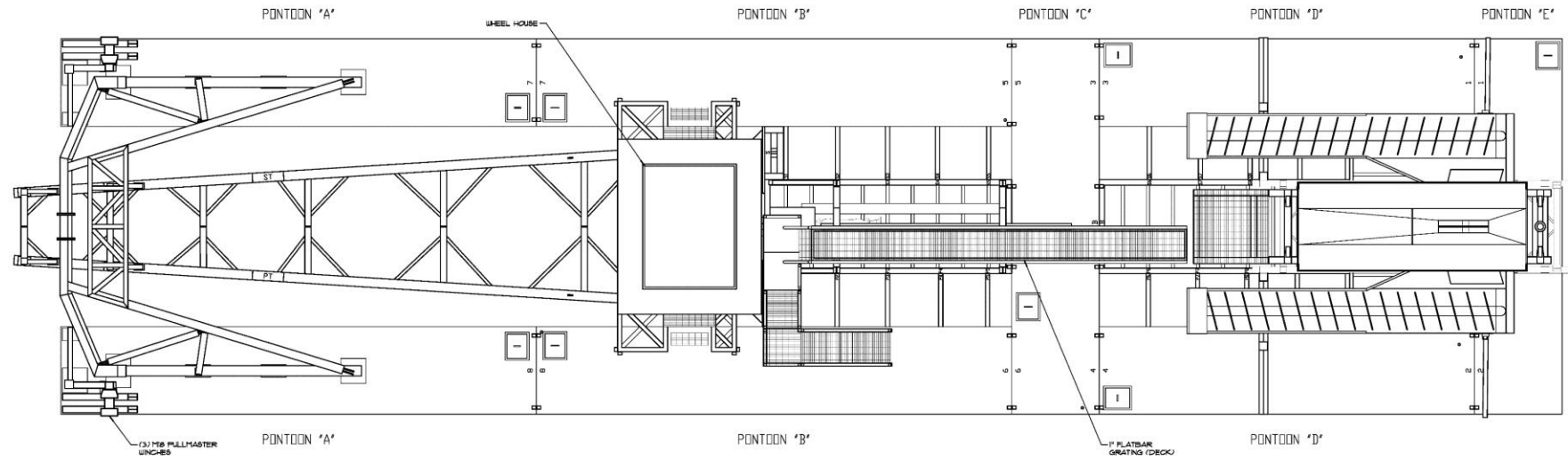


## Shop Manufactured 30' Wide x 120' Long Headline Mining Dredge

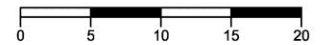
### SCOPE OF SUPPLY:

- Control Room - Operator Console
  - Accessible by Stairs. Where the winch controls and pressure gauges will be mounted





## MINING DREDGE PLAN VIEW



### MINING DREDGE PLAN VIEW

SHEET S-1

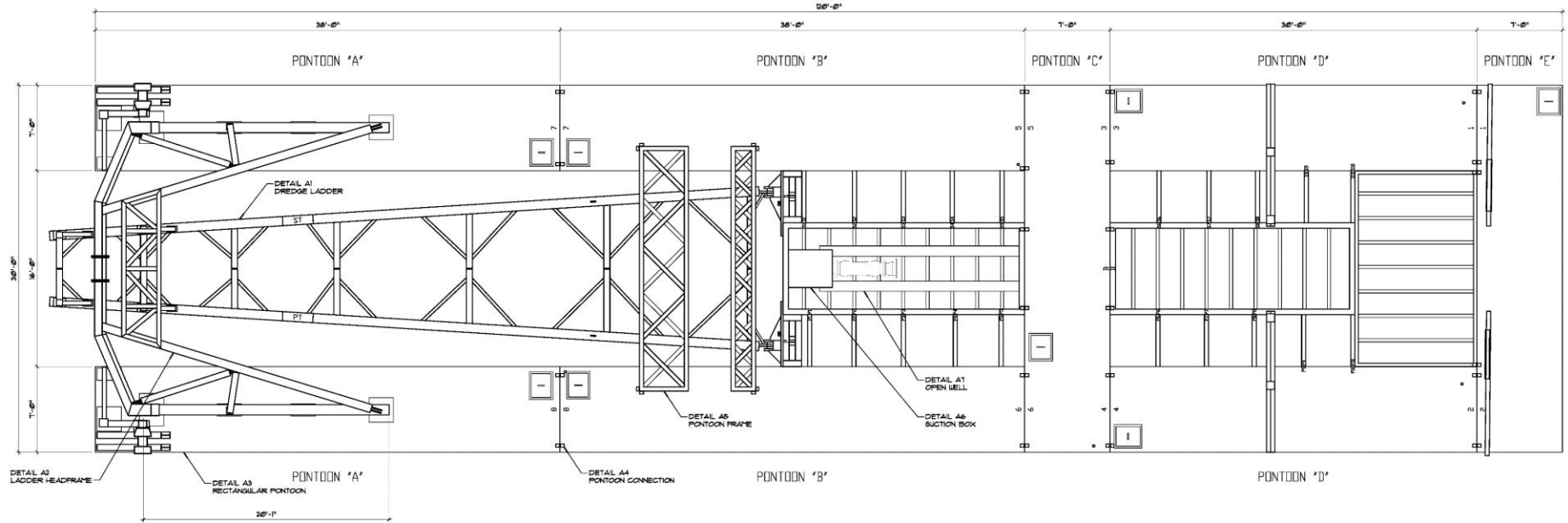
MINATURA NEVADA, CORP.

SCALE: 1/4" = 1'-0"

ENGINEERING & DESIGN: N/A

DRAWN BY: C.G.I.

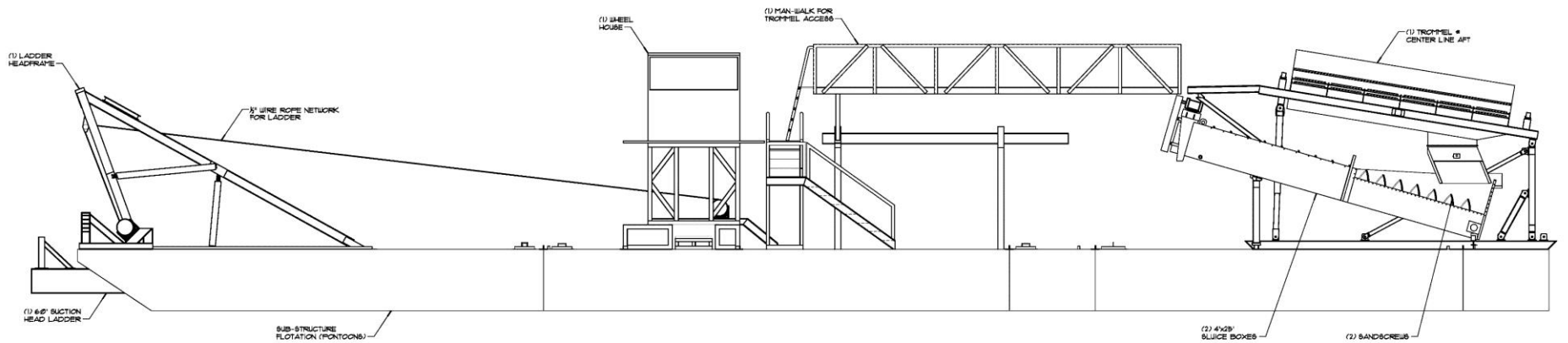
DATE: 02-02-10



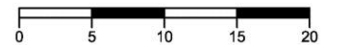
MINING DREDGE DIMENSIONED PLAN VIEW



MINING DREDGE DIMENSIONED PLAN VIEW		SHEET S-2	
MINATURA NEVADA, CORP.		SCALE: 1/4" = 1'-0"	
ENGINEERING & DESIGN: N/A		DRAWN BY: C.G.I.	DATE: 02-02-10



## MINING DREDGE PORT ELEVATION



MINING DREDGE PORT ELEVATION

SHEET S-3

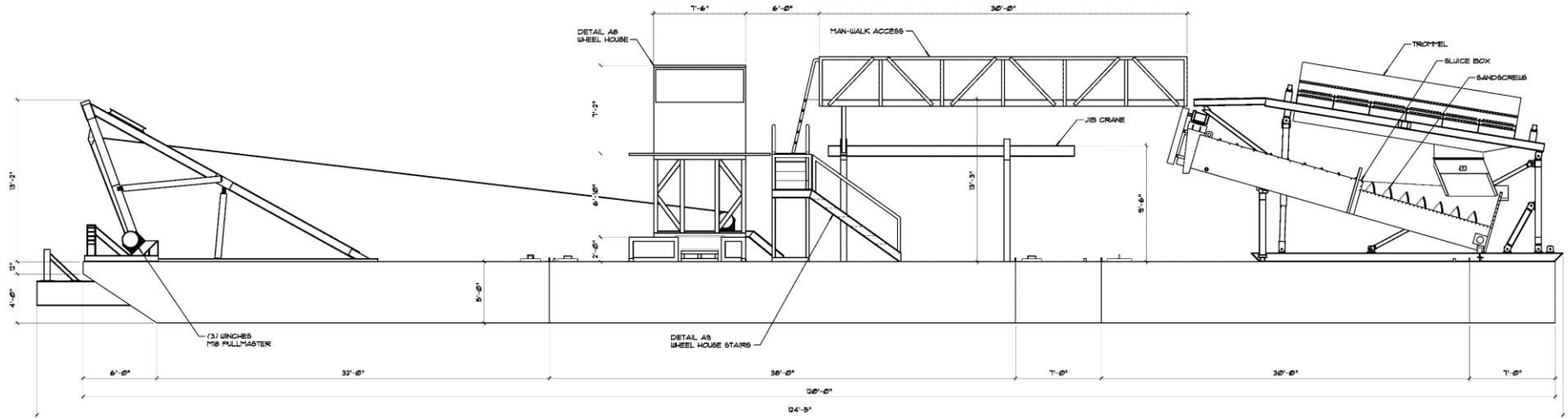
MINATURA NEVADA, CORP.

SCALE: 1/4" = 1'-0"

ENGINEERING & DESIGN: N/A

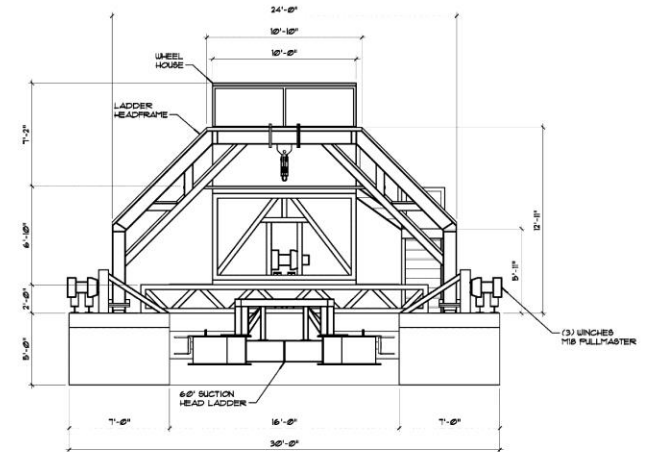
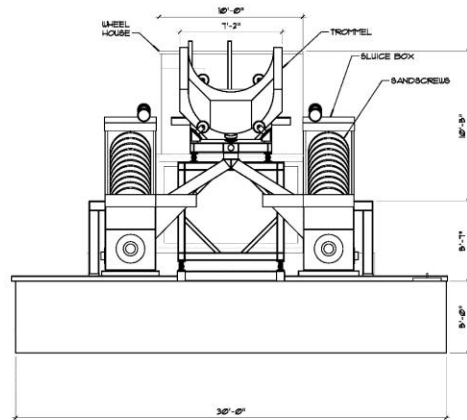
DRAWN BY: C.G.I.

DATE: 02-02-10



MINING DREDGE DIMENSIONED PORT ELEVATION

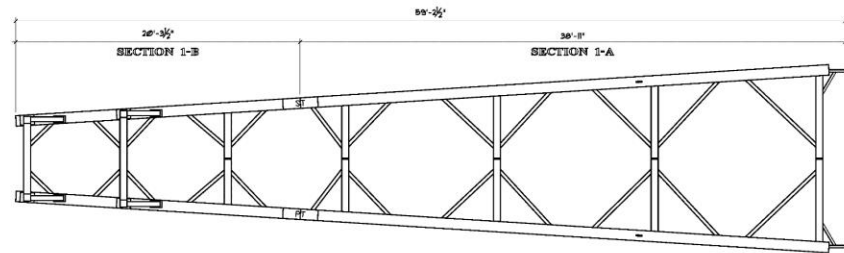
MINING DREDGE DIMENSIONED PORT ELEVATION		SHEET S-4	
MINATURA NEVADA, CORP.	13	SCALE: 1/4" = 1'-0"	
ENGINEERING & DESIGN: N/A		DRAWN BY: C.G.I.	DATE: 02-02-10



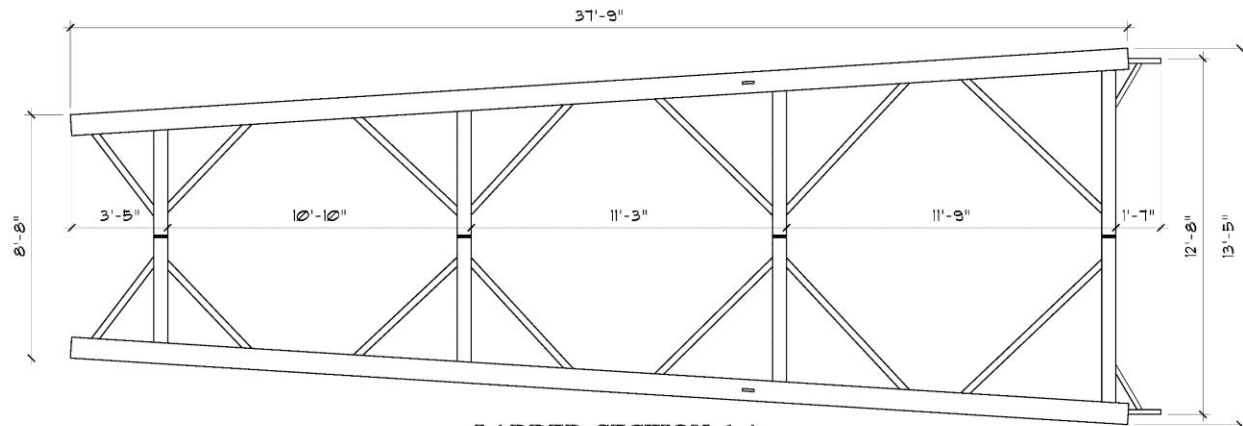
MINING DREDGE FRONT AND REAR ELEVATIONS



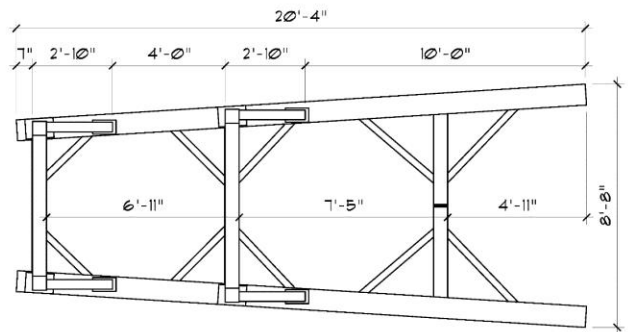
MINING DREDGE FRONT AND REAR ELEVATIONS		SHEET S-5	
MINATURA NEVADA, CORP.		SCALE: 1/4" = 1'-0"	
ENGINEERING & DESIGN: N/A		DRAWN BY: C.G.I.	DATE: 02-02-10



**DETAIL A1 LADDER SCHEMATIC**  
SCALE: 1/4"=1'-0"



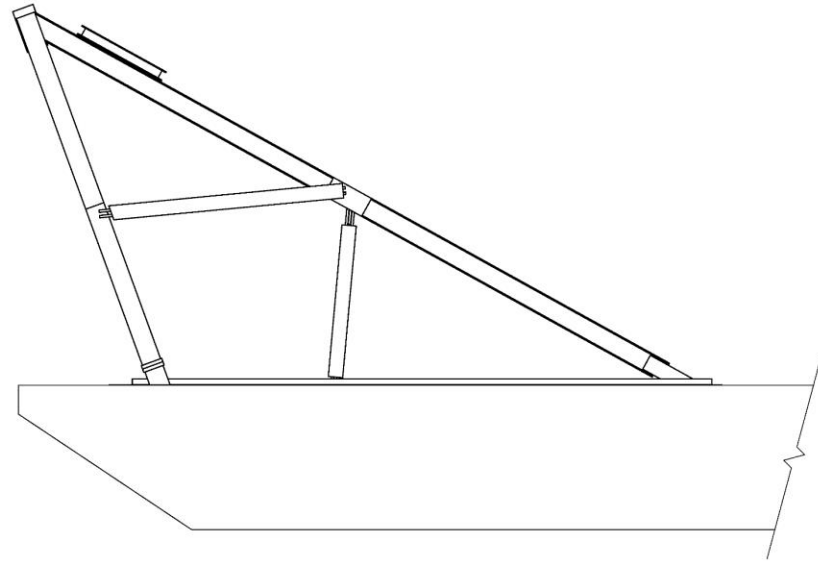
**LADDER SECTION 1-A**  
SCALE: 1/2"=1'-0"



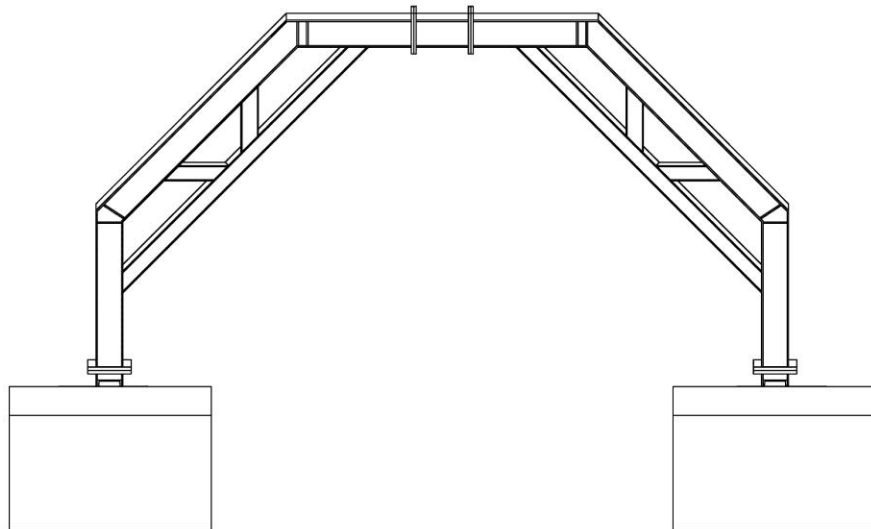
**LADDER SECTION 1-B**  
SCALE: 1/2"=1'-0"



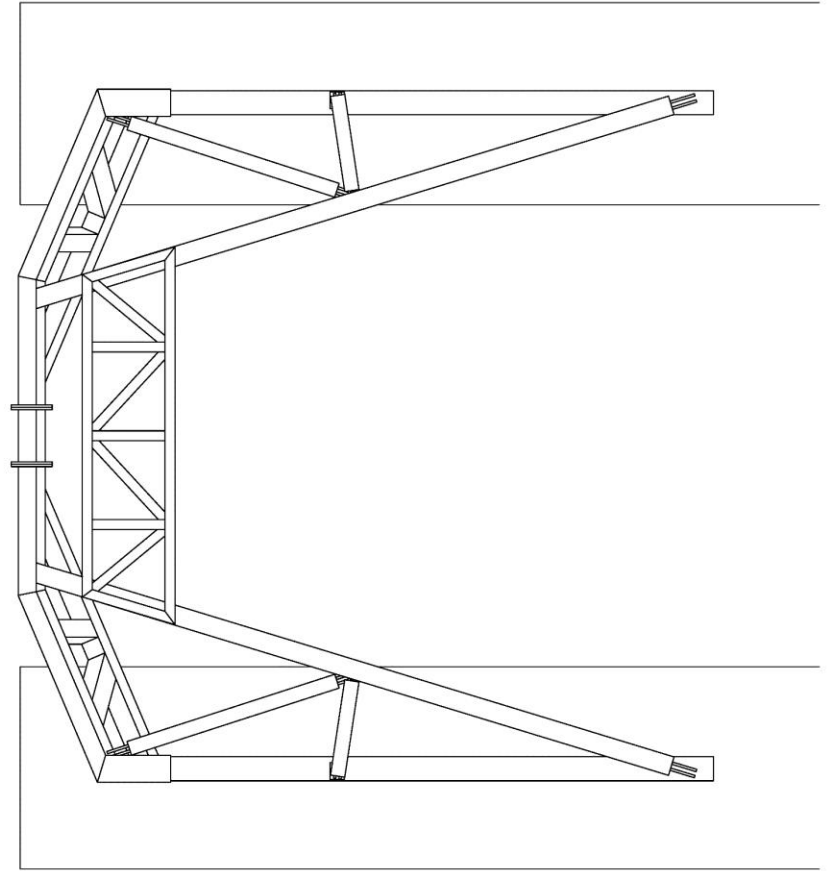
<b>MINING DREDGE STRUCTURAL DETAILS A1</b>		<b>SHEET SD-1</b>
MINATURA NEVADA, CORP.	15	SCALE: 1/2" = 1'-0" U.O.N.
ENGINEERING & DESIGN: N/A	DRAWN BY: C.G.I.	DATE: 02-02-10



DETAIL A2 HEADFRAME SIDE ELEVATION  
SCALE: 1/2"=1'-0"



DETAIL A2 HEADFRAME FRONT ELEVATION  
SCALE: 1/2"=1'-0"

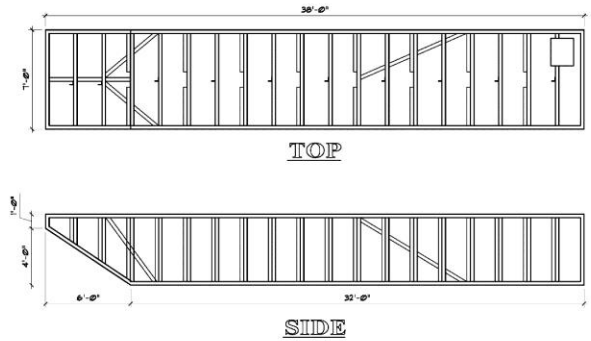


DETAIL A2 HEADFRAME PLAN VIEW  
SCALE: 1/2"=1'-0"

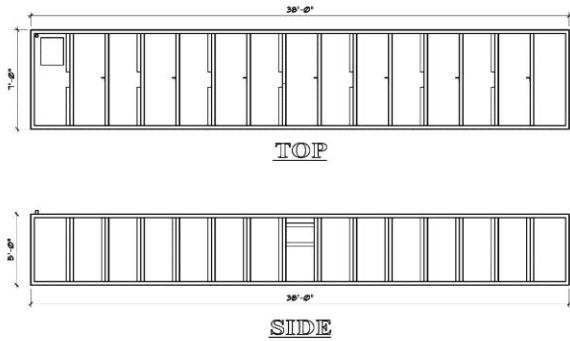


MINING DREDGE STRUCTURAL DETAILS A2		SHEET SD-2	
MINATURA NEVADA, CORP.	16	SCALE: 1/2" = 1'-0"	
ENGINEERING & DESIGN: N/A		DRAWN BY: C.G.I.	DATE: 02-02-10

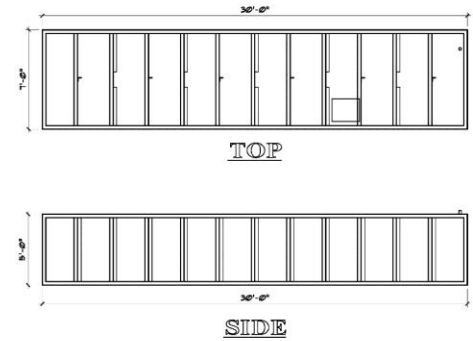




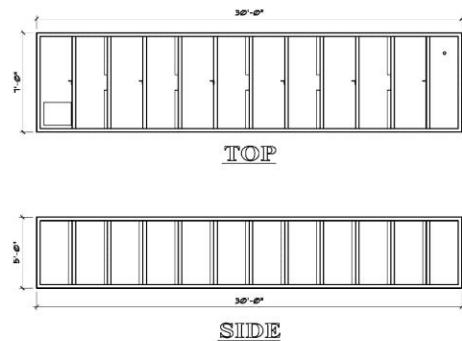
DETAIL A3 PONTOON "A" FRAMING DETAILS  
SCALE: 1/4"=1'-0"



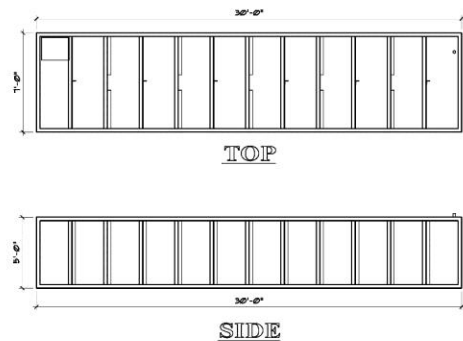
DETAIL A3 PONTOON "B" FRAMING DETAILS  
SCALE: 1/4"=1'-0"



DETAIL A3 PONTOON "C" FRAMING DETAILS  
SCALE: 1/4"=1'-0"



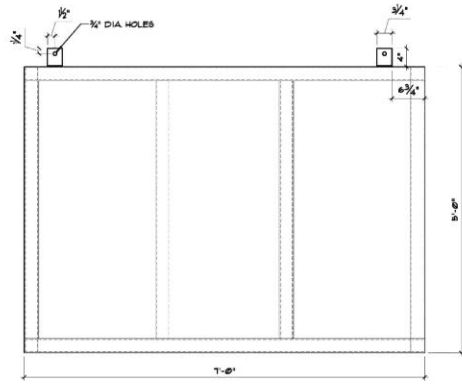
DETAIL A3 PONTOON "D" FRAMING DETAILS  
SCALE: 1/4"=1'-0"



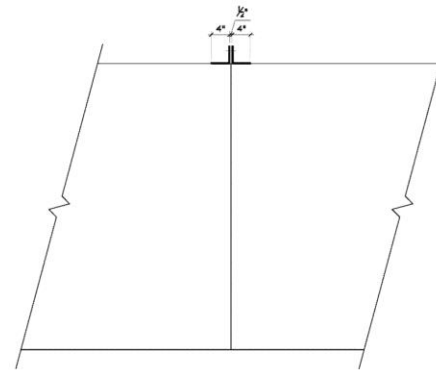
DETAIL A3 PONTOON "E" FRAMING DETAILS  
SCALE: 1/4"=1'-0"



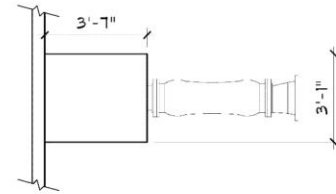
MINING DREDGE STRUCTURAL DETAILS A3		SHEET SD-3	
MINATURA NEVADA, CORP.	17	SCALE: 1/4" = 1'-0"	
ENGINEERING & DESIGN: N/A		DRAWN BY: C.G.I.	DATE: 02-02-10



FRONT

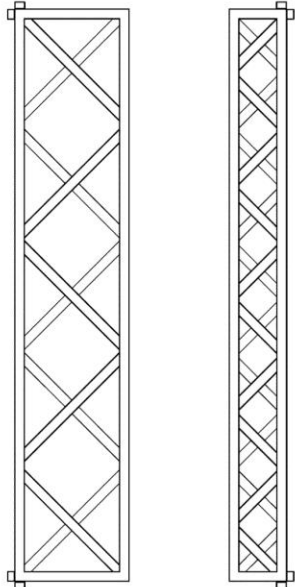


SIDE

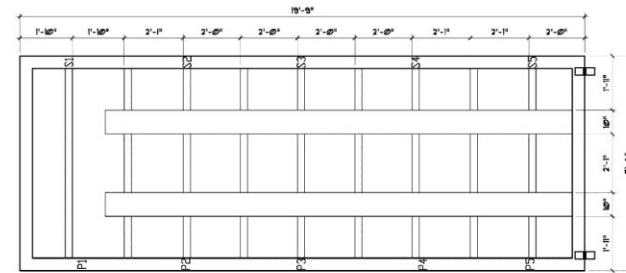


DETAIL A6 SUCTION BOX  
SCALE: 1/4"=1'-0"

DETAIL A4 PONTOON CONNECTION  
SCALE: 1/4"=1'-0"



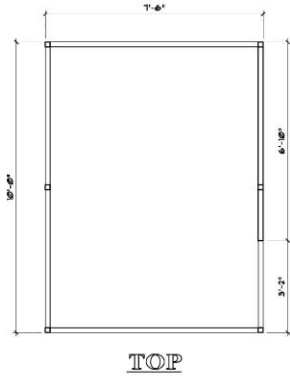
DETAIL A5 PONTOON FRAME  
SCALE: 1/2"=1'-0"



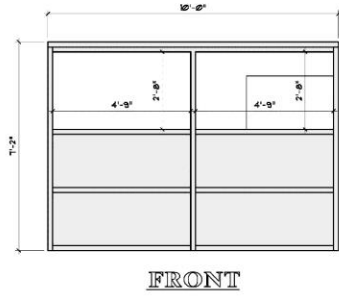
DETAIL A7 OPEN WELL  
SCALE: 1/2"=1'-0"



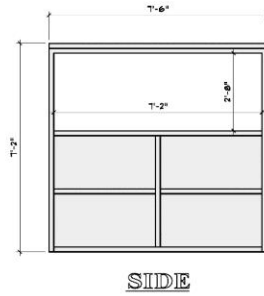
MINING DREDGE STRUCTURAL DETAILS A4 - A7		SHEET SD-4
MINATURA NEVADA, CORP.	SCALE: 1/2" = 1'-0"	
ENGINEERING & DESIGN: N/A	DRAWN BY: C.G.I.	DATE: 02-02-10



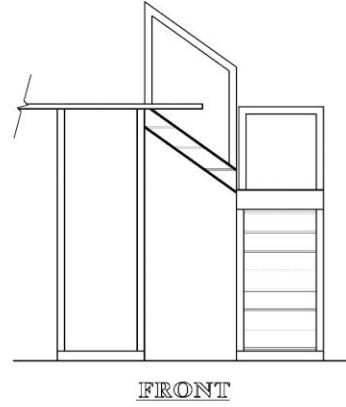
DETAIL A8 WHEEL HOUSE  
SCALE: 1/2" = 1'-0"



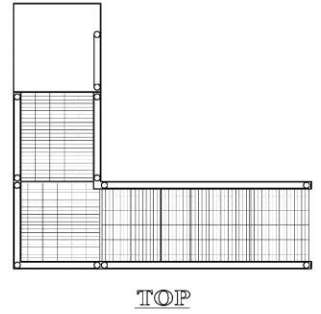
FRONT



SIDE

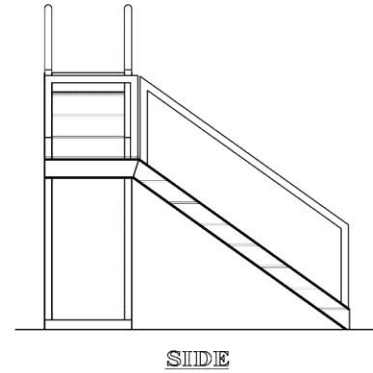


FRONT



TOP

DETAIL A9 WHEEL HOUSE STAIRS  
SCALE: 1/2" = 1'-0"



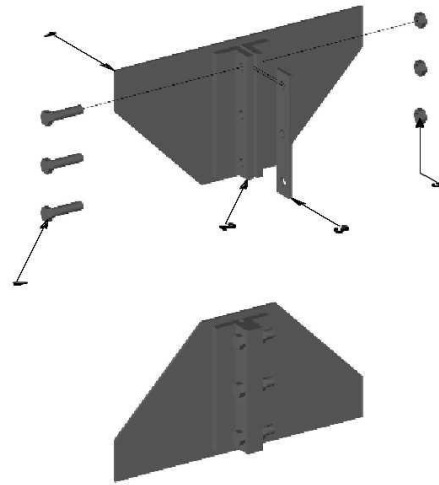
SIDE



MINING DREDGE STRUCTURAL DETAILS A8 - A9		SHEET SD-5	
MINATURA NEVADA, CORP.		SCALE: 1/2" = 1'-0"	
ENGINEERING & DESIGN: N/A		DRAWN BY: C.G.I.	DATE: 02-02-10



Revisions			
Zone	Rev	Description	Date

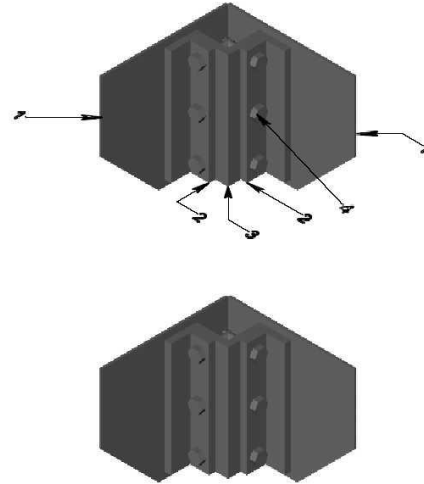


- 1) 3/8" SUPPORT PLATE
- 2) BOLT BRACKET
- 3) SPACER PLATE
- 4) 1 1/4" BOLT

<b>Unless Otherwise</b> Dimensions in Inches Tolerances: Fractional ± Angular: Mach ± Bend ± Two Place Decimal	<b>Name</b>	<b>Date</b>	<b>YUBA INDUSTRIES COMPANY</b>  <b>KING DREDGE PROJECT</b> HULL BOLT ASSEMBLY	
	<b>Drawn</b>			
	<b>Checked</b>			
	<b>ENG Appr.</b>			
	<b>QA</b>			
<b>Material</b>	<b>Comme</b> CAD Generated Drawing		<b>Size</b>	<b>Drawing</b>
<b>Finish</b>				<b>YDC-HB1</b>
<b>Do Not Scale</b>			<b>Scale</b>	<b>1</b>
			<b>NONE</b>	<b>3D File</b>



Revisions			
Zone	Rev	Description	Date

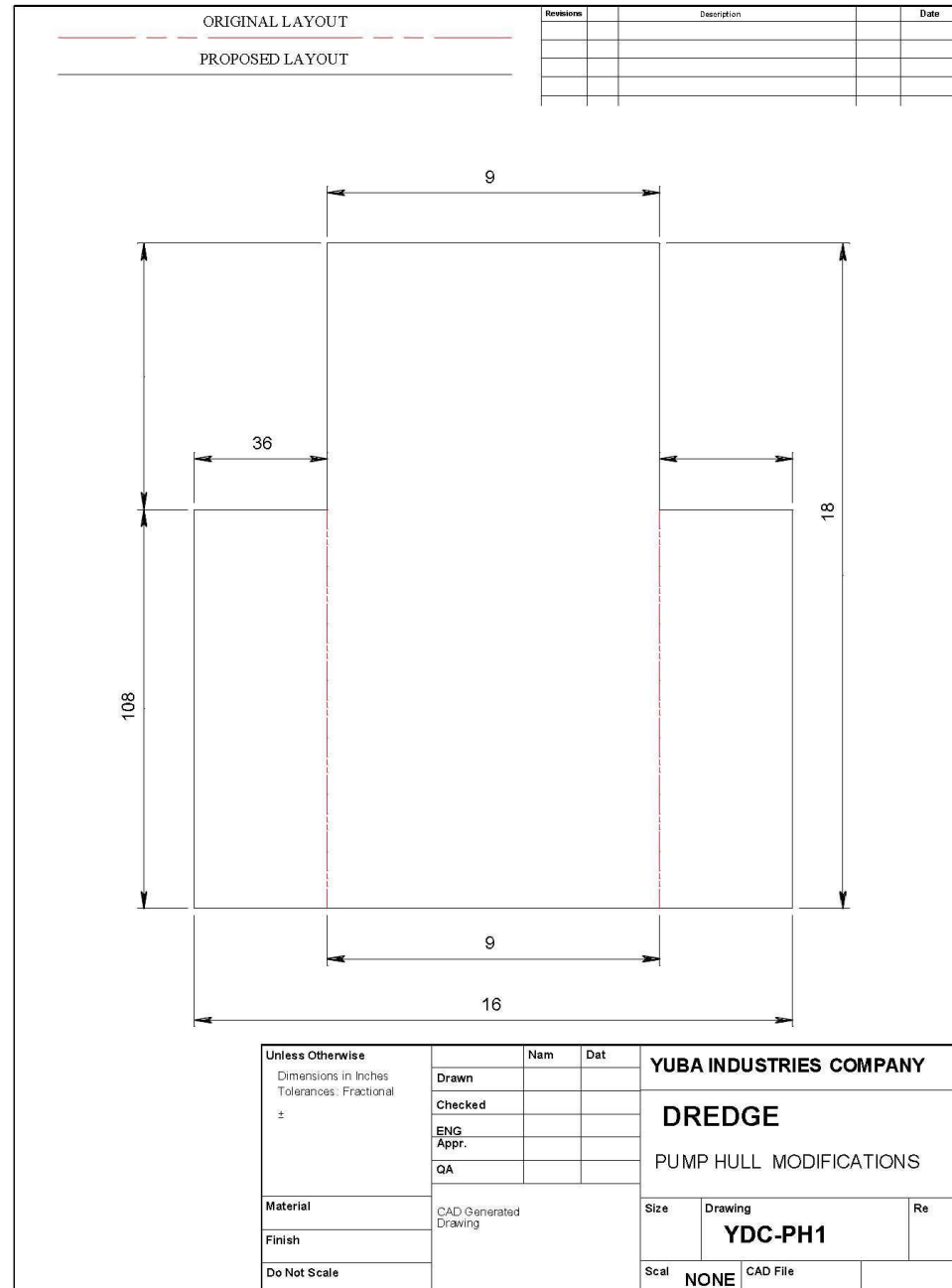


- 1) 3/8" SUPPORT PLATE
- 2) BOLT BRACKET
- 3) CORNER SPACER

<b>Unless Otherwise</b> Dimensions in Inches: Tolerances: Fractional ± Angular: Mach ± Bend ± Two Place Decimal		<b>Name</b>	<b>Date</b>	<b>YUBA Industries</b>  <b>DREDGE PROJECT</b> HULL BOLT ASSEMBLY		
	<b>Drawn</b>					
	<b>Checked</b>					
	<b>ENG Appr.</b>					
	<b>QA</b>					
<b>Material</b>	<b>Comme</b>		<b>Size</b>	<b>Drawing</b>	<b>Rev</b>	
<b>Finish</b>	CAD Generated Drawing			<b>YDC-HB2</b>		
<b>Do Not Scale</b>			<b>Scale</b>	<b>NONE</b>	<b>1</b>	

21

CAD File





## Scope of Supply (Included & What's Needed to Complete)

Dredge Project	Component	Description	Cost
Dredge	Haul & Control Room	A.M. King Ellicot Style Suction Dredge (Unused)	\$ 325,000.00
Cutter Head Pump	Warman 14X16	9,000 GPM 1,000' TB (Used)	Included
Winches	Winches	Pullman Winches (4) (Used)	Included
<b>Components To Complete Dredge</b>			
Hull Bolts	Hull mounting bolts	1 1/4 grade 8, nuts, flats	To Be Costed in Mexico
Winches	Head line winch	Pull Master H18-3	To Be Costed in Mexico
Winches	Ladder hoist	Pull Master H18-3	To Be Costed in Mexico
Winches	Wire Rope	3/4" X 5000'	To Be Costed in Mexico
Cutter Head	Cutter head size	38" 6 Blade	To Be Costed in Mexico
Cutter Head	Cutter head drive	CD38	To Be Costed in Mexico
Cutter Head	Suction mouth piece	16" Suction	To Be Costed in Mexico
Cutter Head	Head plate	16" head plate	To Be Costed in Mexico
Hydraulic System	Cutter drive pump	180 CC variable displacement	To Be Costed in Mexico
Hydraulic System	winch drive pump	3 stage pump	To Be Costed in Mexico
Hydraulic System	Pilot system pump	Pilot system	To Be Costed in Mexico
Hydraulic System	Winch control pilot valves	directional control joy stick	To Be Costed in Mexico
Hydraulic System	Pilot control valves	pilot controlled flow valves	To Be Costed in Mexico
Hydraulic System	Reservoir #1	100 gallon reservoir	To Be Costed in Mexico
Hydraulic System	Reservoir #2	200 gallon reservoir	To Be Costed in Mexico
Hydraulic System	Misc. Misc. valves, filters, gauges, strainers ect...		To Be Costed in Mexico
Hydraulic System	Hoses and Fittings Hoses, Fitting, Tubes, Clamps, Etc.		To Be Costed in Mexico
Cutter Head Pump Components	Warman 14X16	Liners ICS wear group	To Be Costed in Mexico
Cutter Head Pump Components	Suction hose	16" x 60' (15' sections)	To Be Costed in Mexico
Cutter Head Pump Components	Discharge Drisco Pipe w/ floats		To Be Costed in Mexico
Electrical	Generator	TBD	To Be Costed in Mexico
Control room	Windows	1/4" Plate Glass glue set	To Be Costed in Mexico
Control room	Door		To Be Costed in Mexico
Control room	Control Panel		To Be Costed in Mexico
Control room	Lights/electrical		To Be Costed in Mexico
Steel	Pump hull expansion	Plate, angel iron, channel, tubing	To Be Costed in Mexico
Steel	Stairs and decking	channel, expanded metal, misc.	To Be Costed in Mexico

A.M. King Provided

Source By  
Customer By  
Vendors Of Their  
Choice



# Example Quotes For Work to Complete (need to be updated to 2020 pricing)

Page 1 of 1

**DSC**  
Dredge

DREDGING SUPPLY COMPANY, INC.  
156 AIRPORT ROAD  
RESERVE, LA 70084  
(985) 479-1355

Quote

Order Number: 0224813  
Order Date: 10/9/2014

Salesperson: PART  
Customer Number: NONCUS

Sold To: YUBA INDUSTRIES      Ship To: YUBA DREDGING

Job #:

Confirm To: TONY MASSEY

Customer P.O.	Ship VIA	F.O.B.	Terms
			NET 30 TERMS

Item Number	Unit	Ordered	Shipped	Back Order	Price	Amount
8500016878	EACH	1.000	0.000	0.000	22,135.000	22,135.00
CUTTER HEAD						
43.00" ID CUTTER HEAD, 6 BLADE, WITH SERRATED EDGES						
2800014498	EACH	1.000	0.000	0.000	48,246.000	48,246.00
CUTTER DRIVE						
CD63 CUTTER DRIVE WITH HYDRAULIC MOTOR AND GEARBOX						
MISCI	EACH	1.000	0.000	0.000	1,979.000	1,979.00
SUCTION MOUTHPIECE						
MISCI	EACH	1.000	0.000	0.000	1,770.500	1,770.50
HEADPLATE						
4 WEEK DELIVERY ON ALL ITEMS						

Net Order: 74,130.50

Less Discount: 0.00

Freight: 0.00

Sales Tax: 0.00

Order Total: 74,130.50

Approval Signature: \_\_\_\_\_

TERMS AND CONDITIONS: The prices listed above are good for 30 days and do not include any applicable sales/use tax. All items quoted are subject to prior sale or commitment. All matters arising out of or relating to this sale shall be governed by the laws of the State of Louisiana (exclusive of conflict of laws principles).



**Introducing New Additions to our**

## SEALED Cutter Drive Assemblies

d s c's new sealed cutter drive assemblies have proven themselves as a tough and reliable system that does not require service water. The sealed cutter drives are supplied with a female reduction gear that accepts the male splined cutter shaft. The tube is an oil filled reservoir that includes anti-friction tapered roller bearings and a duo-cone seal. The sealed cutter drives are designed for easy installation. Converting to a new d s c sealed cutter drive assembly is simple and will not cause considerable down time.



	cd25	cd30	cd38	cd50	cd63	cd71	cd80	cd102
<b>torque</b>	32,629 in-lbs 3,695 N-m	88,414 in-lbs 9,986 N-m	144,933 in-lbs 16,368 N-m	229,433 in-lbs 25,912 N-m	407,784 in-lbs 46,056 N-m	679,073 in-lbs 76,695 N-m	1,054,120 in-lbs 119,053 N-m	2,400,195 in-lbs 271,081 N-m
<b>rated power</b>	25 hp 19 kW	60 hp 45 kW	90 hp 67 kW	130 hp 97 kW	200 hp 149 kW	300 hp 224 kW	400 hp 298 kW	800 hp 597 kW
<b>rated speed</b>	48 RPM	42 RPM	38 RPM	35 RPM	31 RPM	27 RPM	24 RPM	21 RPM
<b>rated flow</b>	20 GPM 78 l/min	36 GPM 138 l/min	54 GPM 204 l/min	80 GPM 228 l/min	84 GPM 318 l/min	123 GPM 468 l/min	163 GPM 618 l/min	297 GPM 1122 l/min
<b>rated pressure</b>	2400 psi 165 bar	3250 psi 224 bar	3250 psi 224 bar	4230 psi 292 bar	4680 psi 323 bar	4790 psi 330 bar	4480 psi 309 bar	4930 psi 340 bar





# Example Quotes For Work to Complete (need to be updated to 2020 pricing)

## QUOTATION

DATE: 10/22/2014  
 QUOTE #: H14.606YD

HYDRA WORKS, LLC  
 37505 BROWNS VILLAGE RD.  
 SLIDELL, LA 70460 STE. B

YUBA INDUSTRIES  
 Marysville, Ca.

PH: 985-645-8726  
 FX: 985-645-8678

ATTN: John  
PH  
FX

[geneqhydraworksllc.com](http://geneqhydraworksllc.com)

Ref: Hydraulic equipment for dredge

Page 1

ITEM NO	QTY.	DESCRIPTION	UNIT PRICE	TOTAL
		Cutter Drivecomponents		
	1	Sundstrand 180 CC variable volume hydraulic pump - closed loop, pilot operated controlled		
2	1	Parker IL2 suction filter		
3	1	Parker 80 CN chargefilter		
4	1	900116-M4S friction holdjoy stick		
5	1	100 Gallon capacity hydraulic oil reservoir c/w filler breather, sight-temp guage, float switch, and paint.		
6	1	XRJB-LCN-A61S cross port relief valve		
		Winch operation components		
7	1	P76 triple stage hyd. pump 75 gpm/ 35 gpm/ 35 gpm		
8	1	A10V010 Pilot pump		
9	1	V90-M-M-HRO directional valve- Ladder and head line winch operation		
10	1	PCL402-04 Remote joy stick control- Ladder and head line winch		
11	2	DVA35-M-M-HRO directional control- positioning Winch operation		
12	2	PCL402-04 Remote joy stick control- positioning winch operation		
13	1	RF210-10Q return line filter		
14	1	AOC-50-50-2-3PH Oil cooler		

GENE BOURGEOIS

DATE: 10/22/2014  
 QUOTE #: H14.606YD

HYDRA WORKS,PLC  
 37505 BROWNSVILLAGE RO.  
 SLIDELL, LA 70460 STE. B

YUBA INDUSTRIES  
 Marysville, Ca.

PH: 985-645-8726  
 FX: 985-645-8678

ATTN: John  
F

[gene\\_hydraworksllc.com](http://gene_hydraworksllc.com)

Ref: Hydraulic equipment for dredge

Page 2

ITEM NO.	QTY.	DESCRIPTION	UNIT PRICE	TOTAL
		Continue winch operation components		
1	1	IFP-092 suction strainer		
1	1	IFP-055 suction strainer		
1	1	IFP-016 suction strainer		
1	2	LEFC 1655 24LM Electric flow control -variable speedc control for positioning winches		
19	2	EC20200 Remote electrical variable remote control operating item 18		
20	1	200 Gallon capacity hydraulic reservoir c/w filler breather, sight-temp guage, float switch, suction strainer installed, and paint		
21	4	PR101 Pressure reducing valves		

**Note: Electric motors, couplings, piping, hose, and fitting to be supplied by YUBA**  
 All the listed equipment to be installed by YUBA. This quote excludes any taxes.  
 Prices subject to change with any alterations.  
 Terms: 50% deposit wit order, balance upon shipment  
 Fob: Slidell, La. 70460  
 Delivery: 0 weeks, after receipt of deposit

Tax \$53,000.00

GENE GEO - 25



Mining Process Equipment  
Sales  
Consignment Services  
Worldwide Storage Solutions  
Inspection & Valuations  
[www.amking.com](http://www.amking.com)

2875 Feather River Boulevard Oroville, CA 95965  
Web: [www.amking.com](http://www.amking.com) Email: [info@amking.com](mailto:info@amking.com)  
Toll Free: 1.800.334.6699 International: +1 530.534.7965 Fax: 530.534.6013